

**GENERAL TIRE** 

**ST250<sup>LP</sup>**

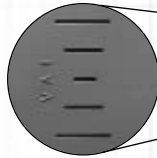


GENERAL TIRE  
MEDIUM TRUCK

# ST250LP

## LONG HAUL TRAILER

Visual Alignment Indicators (VAI®) alert users to tire tracking problems.



Stone ejection system reduces stone retention and casing penetrations.

See through grooves aid in water evacuation providing excellent wet traction.



**Applications:**  
Primarily Trailer position.

### TIRE SPECIFICATIONS Highway - 75 mph at loads indicated unless otherwise stated.

TIRE SIZE	LOAD RANGE	TREAD DEPTH	PRODUCT CODE	SAP ARTICLE NUMBER	RIM WIDTH IN	OVERALL INFLATED	OVERALL INFLATED	LOADED SECTION	STATIC LOADED	MINIMUM DUAL	REVS PER MILE	TIRE WEIGHT	MAX LOAD@INFLATION			
						DIAMETER IN (mm)	WIDTH IN (mm)	WIDTH IN (mm)	RADIUS IN (mm)	SPACING IN (mm)	(KM)	LB (KG)	lbs (KG)	psi (KPa)	lbs (KG)	psi (KPa)
255/70R22.5	H	16/32	0169175	05681130000	8.25*	36.5 (927)	9.8 (250)	11.0 (280)	16.9 (428)	11.3 (287)	566 (352)	88 (40)	5510 (2500)	120 (830)	5070 (2300)	120 (830)

Note: Minimum Dual Spacing calculated without chains.  
These specifications subject to change without notice.

\*Alternate approved rim 7.5