



# Making The Difference

Specialist Radial Tires for Maximum Efficiency



Industrial Tires

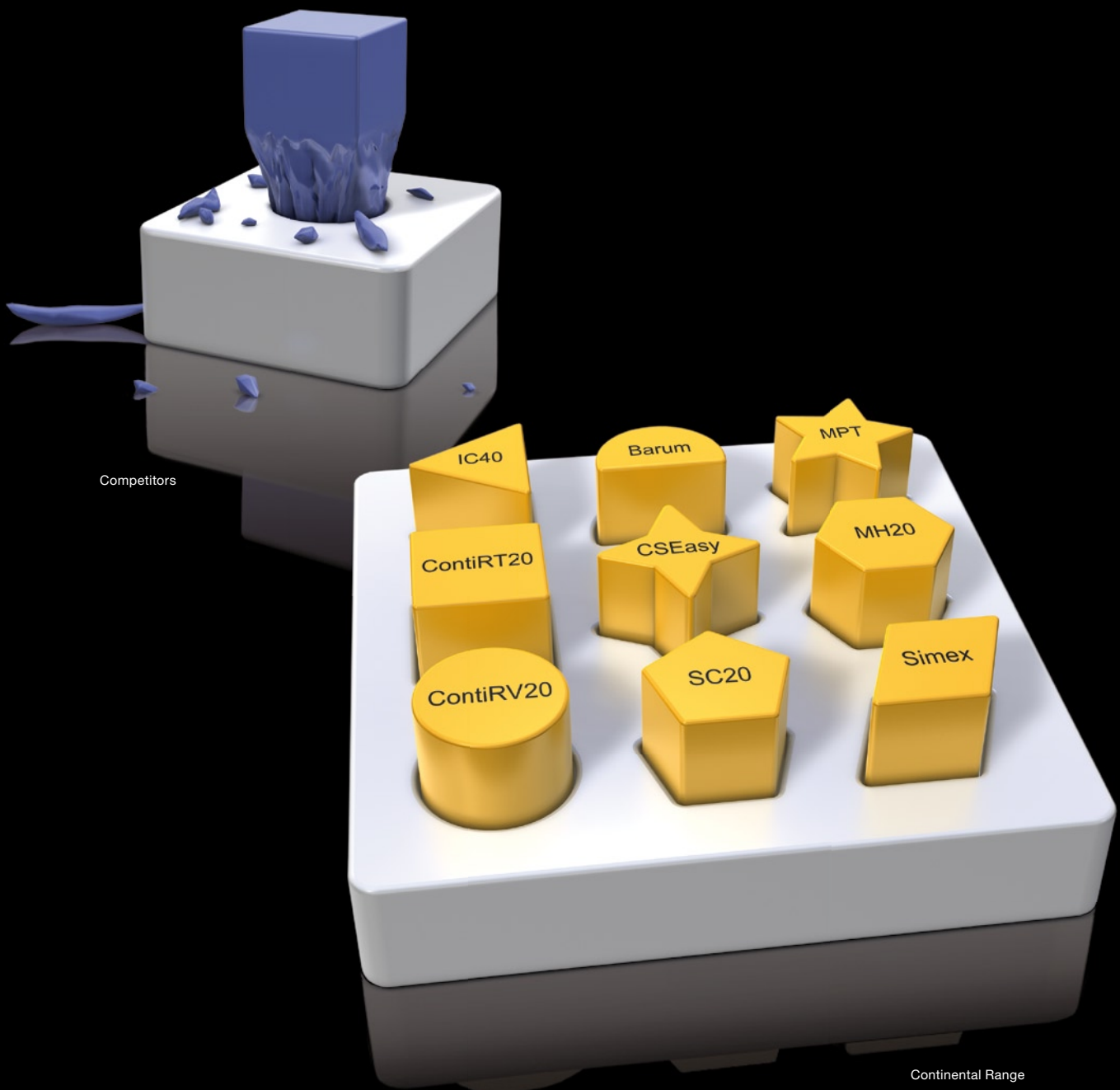
Lift Up Your Business!

**Continental**

# Designing Balance – The Continental Way

Continental engineers understand that tire development is a balancing act. Design requirements vary depending on the intended use and can often be at odds with one other. For example, an increase in tire comfort results in a reduction of tilting stability.

Continental's answer: satisfy each specific customer requirement with a broad portfolio of specialised products having finely balanced performance features. Competitors try to implement a general product for multiple applications, which sometimes does not fit.





ContiRT20 "We are satisfied not only with the ContiRT20's performance and price, but above all with the high-quality support from Continental. It is reassuring to know that Conti is always there at our side to provide reliable backup."

*Claude Maetz, Technical Fleet Manager at Aporlis by Kronenbourg (Rosheim, France)*



ContiRT20 "The ContiRT20 is an extraordinarily good tire for our requirements. Just like the service from Conti. You notice they understand something about customer satisfaction."

*Roy Blanco, Site Operations Manager at iLevel by Weyerhaeuser (Long Beach, USA)*



ContiRT20 "The reliable ContiRT20 Performance is the right tire for us, because we cannot afford downtimes. Its long lifetime means the cost-benefit analysis works out really well for us."

*Ernst Tober, Fleet Manager at Stora Enso Timber AG (Ybbs, Austria)*



ContiRT20 "The long lifetime and the durability of the ContiRT20 Performance are really great. Breakdown-related downtimes can therefore pretty much be ruled out."

*Billy Obereisenbuchner, Plant Manager at HABA-BETON (Teising, Germany)*



ContiRT20 "Our relationship with Continental has always been excellent. The robust, long-lasting ContiRT20 Performance helps to ensure that it stays that way."

*José Antonio Gujarró, Team Manager at Cerámicas Mazarrón (Toledo, Spain)*



ContiRV20 "The results of the ContiRV20 are very impressive! Within just a few months, we reached a dramatic improvement of more than 4.5 times the wear life, the virtual elimination of flats, and fewer incidents of sidewall damage!"

*Ron McCord, Sales Manager, Tire Services, Inc. (Chicago, USA)*



ContiRV20 "Now with ContiRV20 delivering more than 52 weeks lifetime, the operational cost savings, including a significant reduction in downtime, is a major benefit to the airline."

*Henk Van Diggele, General Manager for SolidPlus (Sydney, Australia)*



# ContiRT20 Performance

## The New Standard in Power and Durability

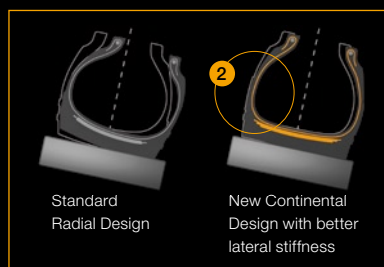
### ► Increased tire life

- ▶ Extra deep tread depth and maximum tread wear volume **1**
- ▶ Reduced energy consumption and CO<sub>2</sub> output via low rolling resistance rubber compounds
- ▶ Low abrasion tread compound with resistance to damage caused by cuts and tears



### ► Maximum tilting stability

- ▶ Wide flat belt construction with reinforced steel beads **2**
- ▶ Stiffened sidewall technology that can adapt to uneven surfaces
- ▶ Maximum tread width ensuring total contact between tire and ground



### ► Comfort and traction on soft and uneven surfaces

- ▶ Heavy duty rugged tread blocks **3**
- ▶ Multiple angled tread edges
- ▶ Better transmission of forces via radial construction

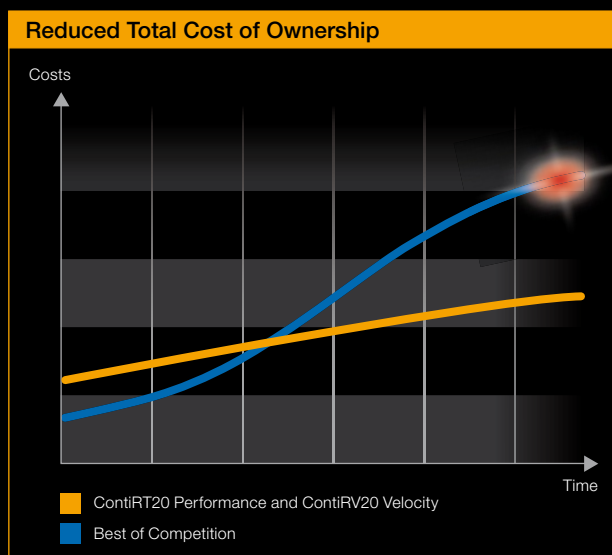
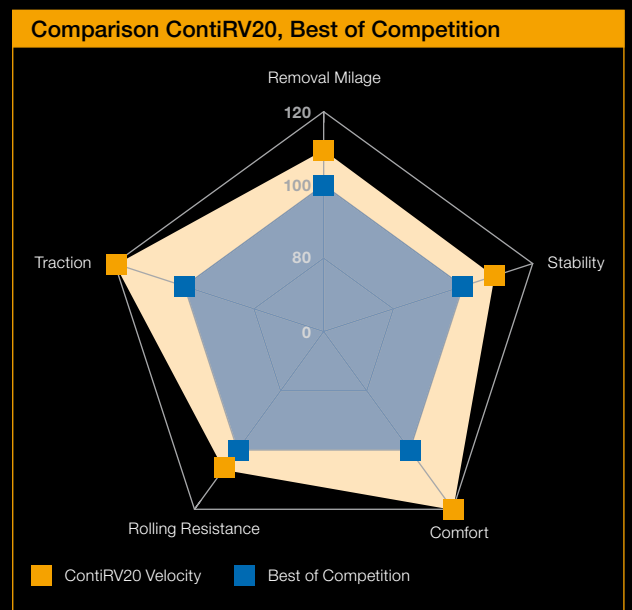
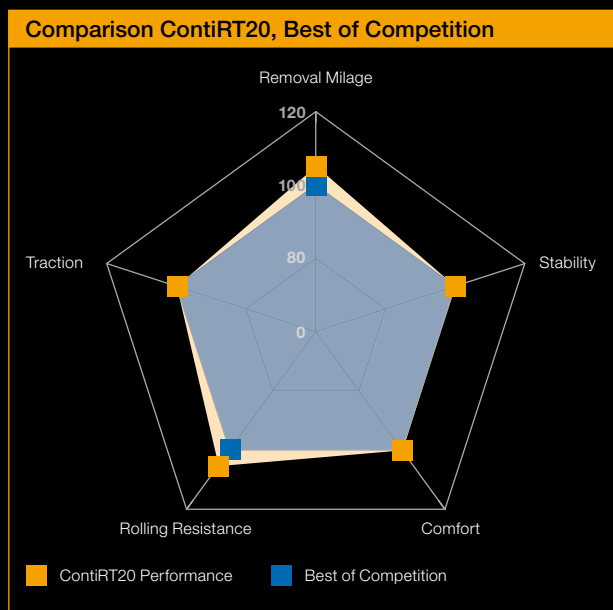


- ▶ Increased tire life: Outstanding mileage, durability, and damage resistance in extreme conditions
- ▶ Maximum tilting stability: Safety when lifting and transporting heavy and fragile loads
- ▶ Traction: All year round performance on difficult surfaces
- ▶ Excellent comfort and handling: Ride comfort and reduced vibration for driver, protection for fragile goods
- ▶ Damage resistance: Higher durability due to industrial tire construction
- ▶ High productivity and lowest total operating cost in tough working conditions



## This Range has it All

In extensive field tests the ContiRT20 and the ContiRV20 have proven to be superior when measured against the best of the competition using key comparison criteria.



Choosing Continental tires can decrease your Total Cost of Ownership, particularly

- ▶ energy costs,
- ▶ operating costs,
- ▶ downtime costs,
- ▶ and overall tire costs.



# ContiRV20 Velocity

## Industrial Strength meets Industrial Speed

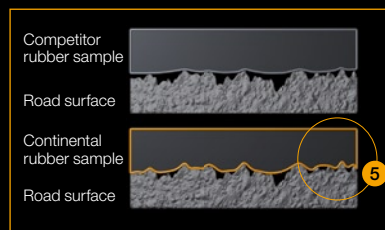
### ► Low energy consumption

- Reduced energy consumption and CO<sub>2</sub> output via low rolling resistance rubber compounds
- Radial tire construction for most efficient transmission of drive forces **4**



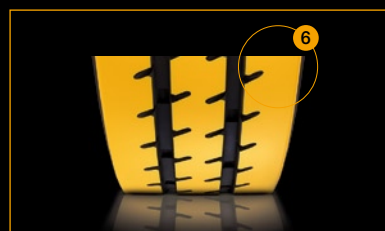
### ► Wet grip and traction

- Molecular tread compound that grips structure of road surface **5**
- Ribbed tread profile for permanent contact with ground surface



### ► Ride comfort and even wear

- Radial tire construction gives optimum damping **6**
- Ribbed tread pattern for smooth road contact
- Closed shoulder to avoid tearing and elimination of saw-tooth wear



- Low energy consumption: Excellent fuel economy and optimum battery life on electric vehicles
- Wet grip and traction: Improved safety via shorter stopping distances and grip on slippery or sloping surfaces
- Excellent comfort and handling: Ride comfort and reduced vibration for driver, protection for fragile goods.
- Damage resistance: Higher durability due to industrial tire construction
- High productivity and lowest total operating cost in fast moving logistic environments

# Available Sizes

## ContiRT20 Performance

Size	PR	LI	SSY	Tire Type
<b>8" Rim</b>				
180/70R8 (18x7R8)	16	125	A5	TL
<b>9" Rim</b>				
6.00R9	12	121	A5	TL
<b>10" Rim</b>				
6.50R10	14	128	A5	TL
225/75R10	20	142		TL
<b>12" Rim</b>				
7.00R12	16	136	A5	TL
250/75R12	20	152		TL
<b>15" Rim</b>				
8.25R15	18	153	A5	TL
225/75R15	16	149		TL
250/70R15	18	153		TL
315/70R15	22	165		
355/65R15	24	175		TL
<b>20" Rim</b>				
10.00R20	18	166	A5	TL
12.00R20	20	176		TL

## ContiRV20 Velocity

Size	PR	LI	SSY	Tire Type
<b>8" Rim</b>				
180/70R8 (18x7R8)	16	125	A5	TL
<b>9" Rim</b>				
6.00R9	12	121	A5	TL
<b>10" Rim</b>				
6.50R10	14	128	A5	TL
225/75R10	20	142		TL
<b>12" Rim</b>				
7.00R12	16	136	A5	TL
<b>13" Rim</b>				
165R13		102	A6	TL
<b>15" Rim</b>				
7.00R15	14	143	A5	TL
7.50R15	16	146		TL

The following Pneumatic Radial Tires are also available:

**IC70:** 5.00R8, 125/75R8, 150/75R8

**ConRad:** 8.25R15, 250/70R15, 315/70R15, 12.00R20

**ConRad HT1:** 8.25R15, 12.00R20

# Tubeless Sealing Ring

## Improved Safety and Mobility

The TSR enables the mounting of tubeless tires on standard industrial vehicle rims. This ensures more mobility, and improved safety by avoiding sudden airloss upon puncture.



Tubeless Sealing Ring

## Environment

Continental takes responsibility for the environment, the climate, nature and the recycling of resources. Continental tires are free of Nitrosamine and Polycyclic Hydrocarbons (aromatic oils which have been used for tire production and are believed to cause cancer).

**Continental tires have a long lifetime** – less tire usage means less disposal. **Continental tires have low rolling resistance** – low rolling resistance means lower vehicle energy consumption and lower emission. **Continental radial tires are produced in ISO14001 environmentally certified production facilities. They have tubeless construction** – repairable tires means less tire disposals.

## Quality

Continental customers can rely on certified quality. The quality management at our international production and service sites has been audited and fully approved to conform to EN ISO 9001: 2008 requirements.

## Total Cost of Ownership (TCO)

Continental strives to offer customer solutions designed to reduce the overall cost of operation – realising that the purchase price is really only one cost component of many. Continental promotes transparency of the Total Cost of Ownership, offering a cost advantage over competitors on the combined basis of purchase price, mileage, rolling resistance, energy consumption and service.

