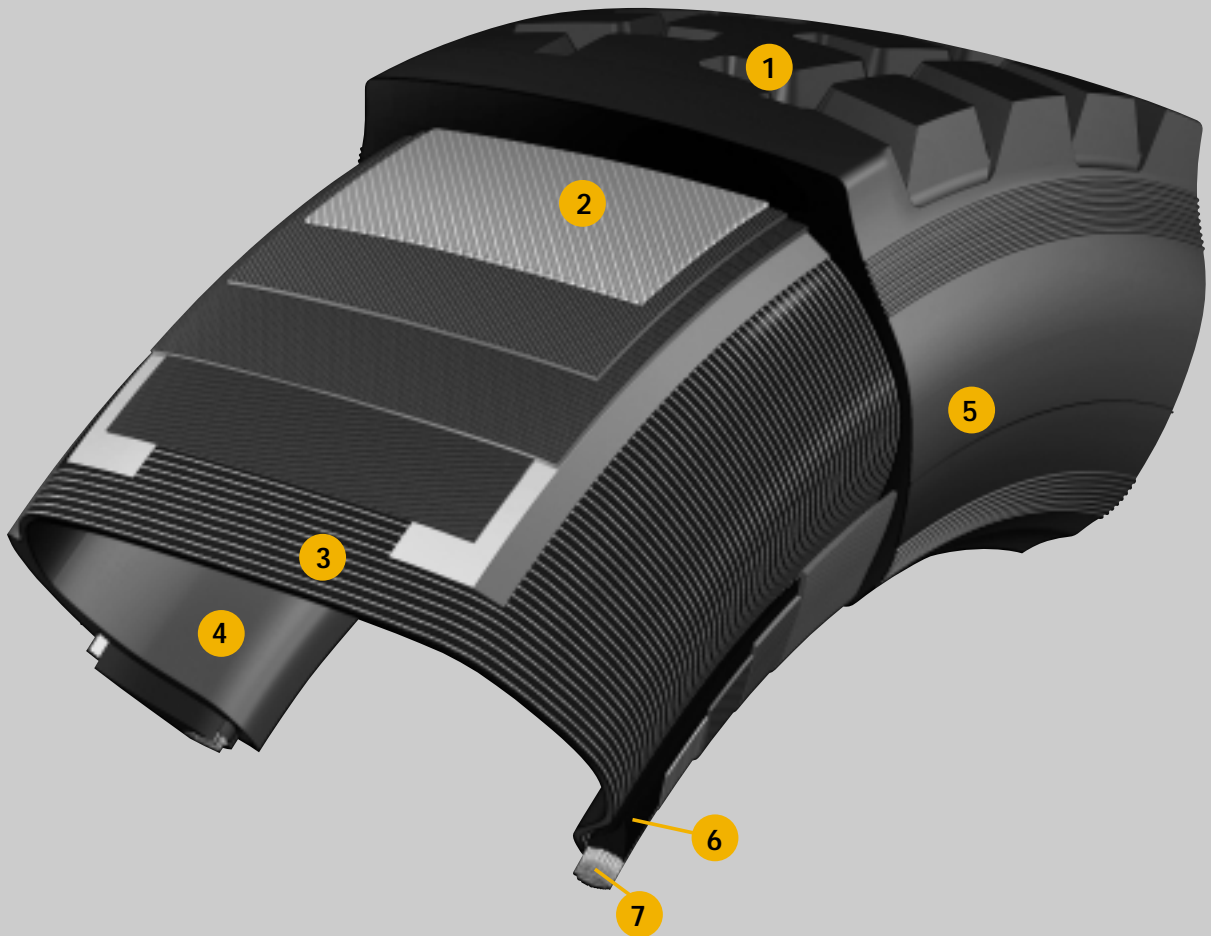


Tyre components and their functions



1 Tread strip

Material	Rubber compound
Function	The tread strip has to provide high wear resistance and good grip under all road conditions. In some instances the tread strip combines two different materials (cap and base); the base is there to minimise the tread temperature and the rolling resistance.

2 Multi-ply steel belt

Material	Steel cords embedded in rubber compound
Function	Enhances driving stability, reduces rolling resistance and gives the tyre its long service life. Restricts casing growth and increases the tyre's structural strength.

3 Steel casing

Material	Steel cord
Function	Gives the tyre its structural strength and its deflection characteristics; substantially determines driving comfort.

4 Inner lining

Material	Rubber compound
Function	Major factor in preventing diffusion of air and moisture in tubeless tyres.

5 Sidewall

Material	Rubber compound
Function	Protects from lateral scuffing and the effects of the weather.

6 Bead reinforcement

Material	Nylon, aramide, steel cord
Function	Securing the end of the steel cord ply on the bead core. Reinforcing the bead against high shear forces.

7 Bead core

Material	Steel wire embedded in rubber compound
Function	Ensures the tyre sits firmly on the rim.