



Your Partner at Zero Altitude

Continental Tire Solutions for Ground Services



Industrial Tires

Lift Up Your Business!



The Optimal Answer for Every Requirement

Continental is the only supplier to offer the complete range of tires required for the airport industry. Whether Industrial, Passenger, MPT or Truck Tires, Continental tires are the best solution for anyone concerned about their operating costs. Continental satisfies specific airport customer requirements with a broad portfolio of specialized products having finely balanced performance features, which are designed for the variety of functions and vehicles found there. Competitors try to implement a general product for multiple applications, which sometimes does not fit.



Baggage Loader

transports/loads single bags to/from the airplane cargo hold



Water Supply Truck

supplies water to the aircraft



Cabin Cleaning Truck

used to clean passenger cabin and replace blankets, soap etc.



De-Icing Truck

transports and sprays de-icing solution on leading and trailing edges



Lavatory Truck

used to pump waste from aircraft lavatory tanks



Snow Plough

clears snow from the runway, taxiways and terminal area (tarmac)



Catering Truck

transports and delivers food and beverages to the aircraft



Container/Pallet Transporter

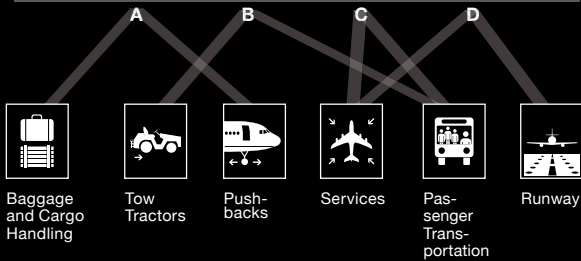
used for transporting freight containers



Continental



Competitors



Fuel Truck

transports and delivers fuel to the aircraft

17



Fire Truck

is always on standby to fight fires

16



Tow Tractor

tows luggage/freight dollies and equipment, and serves as general transportation

15



Ramp Supervisor Vehicle

transports ground support and services supervisors

14



Aircraft Taxi

directs airplanes to/from runway and terminal

13



Push Back Tractor

pushes aircraft away from the gate to the taxiway

12



Passenger Bus and VIP/Crew Transport Vehicle

transport passengers to/from the airplane

11



Ground Power Unit

powers aircraft when engines are shut down

10



Container Loader

used to load/unload freight

9

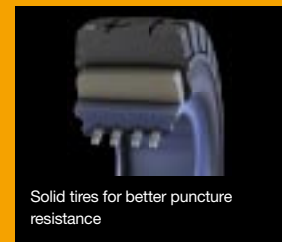
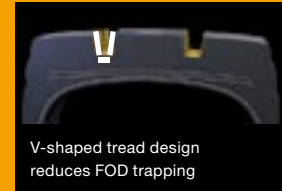


Reducing Costs with Technology

Minimize Foreign Object Damage (FOD)

Foreign Object Damage is an essential topic for the safety of airports. Therefore, Continental Tires are designed to minimize the production and transportation of foreign objects on the airfield. How is this done?

- ▶ Foreign Object Trapping – Tread patterns are designed to reduce or eliminate the trapping of foreign objects.
- ▶ Foreign Object Creation – Tire constructions with flexible carcasses, such as radial pneumatic, combined with even tread wear reduce vehicle vibration and therefore lower the risk of ‘creating’ foreign objects. Tire treads with ribbed profiles are less subject to losing tread rubber after impacts or tearing.
- ▶ Foreign Object Damage to Ground Support Vehicles – Robust tire constructions reduce vehicle downtime due to tire failures from FOD.

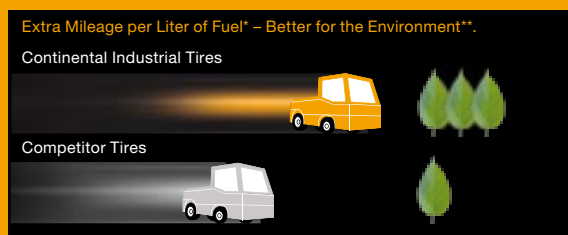


NOTE: Tire solutions have the possibility to reduce or minimize tire-related FOD, but do not eliminate FOD presence on the airfield or the risk of damage to aircrafts. They also do not replace the need for FOD checkpoints and other anti-FOD measures.

Lower your Total Cost of Ownership

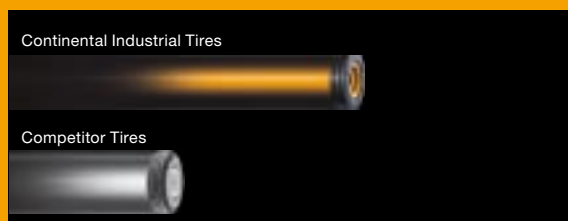
Choosing Continental tires can decrease your Total Cost of Ownership, particularly energy costs, operating costs, downtime costs, and overall tire costs.

▶ Lower rolling resistance = Lower energy costs

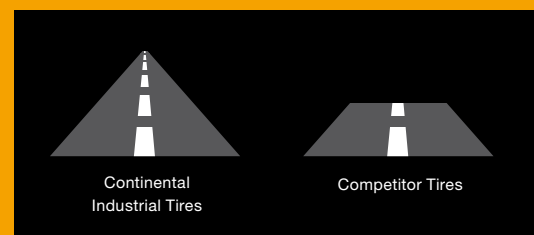


* based on rolling resistance measurements
** results can vary based on vehicle and usage

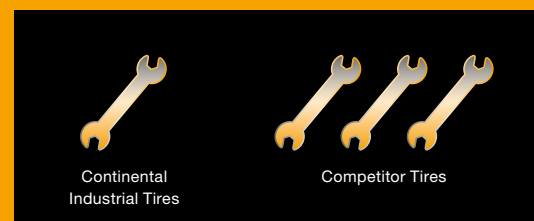
▶ Durability = Longer service life



▶ Higher Lifetime = Lower overall tire costs



▶ Lower maintenance = Lower operating costs





Tow Tractors

- ▶ Single cabin
- ▶ Double cabin
- ▶ Platform trucks
- ▶ Open cabin

▶ Industrial Radial Tires



ContiRV20

- New pneumatic radial tire specifically designed for use on ground support equipment, especially tow tractors
- Ribbed tread design to minimize vibration and uneven wear to delivery maximum mileage and ride comfort
- Robust construction to minimize FOD (foreign object damage)
- Innovative compound technology to ensure low rolling resistance which reduces fuel consumption and vehicle CO₂ output.



Baggage and Cargo Handling

- ▶ Belt loaders
- ▶ Pallet/container loaders
- ▶ Pallet/container transporters
- ▶ Dollies

▶ Industrial Radial Tires

▶ Industrial Solid Tires: Super Elastic

▶ Industrial Solid Tires: Press on Band



ContiRV20



SC 20



SH 12



MC 20



MH 20



Pushback

- ▶ Towbar pushback tractors
- ▶ Towbarless pushback tractors

▶ Industrial Pneumatic Tires

▶ Simex Material Handling Tires



ContiRV20



IC 40



SE188



SE132



Passenger Transportation

- ▶ Buses
- ▶ VIP transport vehicles
- ▶ Crew transport vehicles

▶ Bus Tires

▶ PLT Tires (VIP/Crew transport)



HSU



HSR



HSL



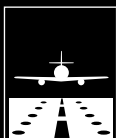
Conti Premium
Contact 2



TS830



Conti Vanco



Runway

- ▶ Snow ploughs
- ▶ Cleaning machines
- ▶ Fire trucks
- ▶ Aircraft taxis

- ◉ Industrial MPT Tires (Snow ploughs)
- ◉ Industrial Radial Tires (Cleaning machines)
- ◉ Truck Tires (Fire trucks)
- ◉ PLT Tires (Aircraft taxis)



Service

- ▶ Ramp supervisor vehicles
- ▶ De-icing trucks
- ▶ Catering trucks
- ▶ Fuel trucks
- ▶ Generators
- ▶ Lavatory/Water supply trucks

- ◉ Industrial Radial Tires (Lavatory/Water supply trucks)
- ◉ Light Truck Tires
- ◉ Truck Tires (Fuel trucks)
- ◉ Passenger Tires (Ramp supervisor vehicles)



Environment

Continental takes responsibility for the environment, the climate, nature and the recycling of resources. Continental tires are free of Nitrosamine and Polycyclic Hydrocarbons (aromatic oils which have been used for tire production and are believed to cause cancer).

Continental tires have long lifetime – less tire usage means less disposal. **Continental tires have low rolling resistance** – low rolling resistance means lower vehicle energy consumption and lower emission. **Continental radial tires have tubeless construction** – repairable tires means less tire disposals.



Quality

Continental customers can rely on certified quality. The quality management at our international production and service sites has been audited and fully approved to conform to ISO 9001-2000 requirements.



Total Cost of Ownership (TCO)

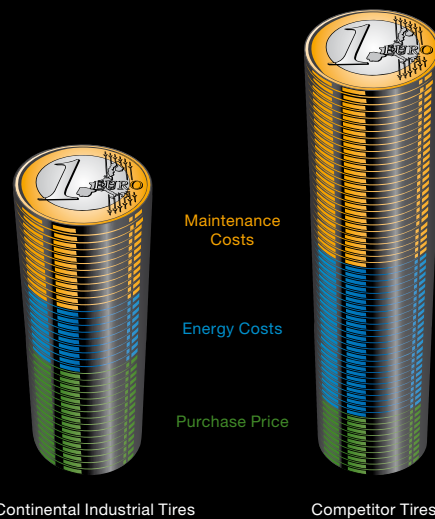
Continental strives to offer customer solutions designed to reduce the overall cost of operation – realizing that the purchase price is really only one cost component of many. Continental promotes transparency of the Total Cost of Ownership, offering a cost advantage over competitors on the combined basis of purchase price, mileage, rolling resistance, energy consumption and service.

Demand more from your tires and contact us!

www.continental-industrial-tires.com

More information under:

www.continental-corporation.com



Continental Industrial Tires

Competitor Tires