



# 2012 Training Program

TrainingsCenter – Knowledge in the fast lane

**Continental** 



# The TrainingsCenter: Knowledge in the fast lane

**Securing market shares and expanding successfully – in an increasingly competitive environment, this is the decisive challenge for independent vehicle workshops. This is a challenge that must be mastered. The basis for doing so is formed by the solid knowledge possessed by all workshop employees.**

The goal of the Continental TrainingsCenter is to transfer this knowledge in the best possible way through the cooperation of all participants. With specific training courses for the ATE and VDO product brands, our product range is completely designed with this in mind.

#### **Practical training:**

Anyone who works professionally and creates efficient error diagnostics, increases the workshop's profitability. For this reason, our training programs are deliberately designed for everyday life in the workshop. They range from standard courses on the usual topics to a customized combination of selected training topics. In these training courses, the teaching of theoretical knowledge is always complemented by practical exercises on functional models and vehicles.

#### **Always up to date:**

The Continental training courses for ATE and VDO are set up as modules and adapted constantly to satisfy the latest needs of everyday practice and automotive technology. They are held by experienced trainers. All in all, our training program is designed in such a way that vehicle engineers, service consultants, wholesale sales consultants as well as vocational school teachers can find interesting opportunities for further training.

#### **Training courses in Eschborn or on site:**

The ATE and VDO training courses take place in Eschborn. There are also fixed training locations in Italy and France. In addition, our flexible team is happy to give training courses directly on site anywhere in the world.



## Greetings

Ladies and Gentlemen,

Successful workshops have motivated employees. Rapid implementation of new developments in the vehicle field requires prompt adaptation of the servicing and repair methods.

Only people who perform diagnostic and repair work efficiently will be able to manage their business successfully in the future. A professional customer dialog that awakens enthusiasm and shows competence is – at the very least – just as important here.

Our Continental IAM training program is designed with precisely this in mind. In addition to the classics, we offer topics such as service, diagnostics, certified training in the field of high-voltage technology leading to the “Person trained in electrics (EuP)” and “Electrician” qualifications. Naturally, we also offer training courses on Corporation products.

The modular structure and the fact that the courses are given by trainers with practical experience guarantee high efficiency here as well.

The declared goal of our Continental IAM TrainingsCenter is to master the challenges of the future together with you.

Sincerely,

Helmut Ernst  
Head of Independent Aftermarket Continental  
General Manager, Continental Aftermarket GmbH

Ladies and Gentlemen,

*‘Change favors the prepared mind.’*

Louis Pasteur, 27.12.1822 – 28.09.1895

Nothing is as constant as change – this is also true of our industry. Constant further development in vehicle technology requires rapid adjustment and rapid building up of knowledge. We monitor these trends very closely and adjust our range of training courses to the needs of the market.

The main topic in our training courses is technology, i.e. mechanics and electronics. Important future topics arise concerning high-voltage vehicles. We offer certified training courses for this purpose. We are preparing you for the technology of the future.

Your servicing facilities are of decisive importance. It is quite simply not enough to perform repair work well; this must also be sold equally well. This concept of service is also instilled in participants in our training courses.

We are happy to welcome you among the participants in our training courses.

Sincerely,

Bert-C. Lembens  
Head of TrainingsCenter, Continental Aftermarket GmbH

140 years of the Continental Corporation  
(1871–2011) –  
Innovation and progress for automotive mobility



# Contents

<b>Types of training courses</b>	<b>4</b>
<b>Continental training system – Leading the way</b>	<b>5</b>
<b>Administration and registration</b>	<b>6</b>
<b>Contact data and contact persons</b>	<b>7</b>
<b>1 Information events</b>	
1.1 ATE/VDO Into the future with success	8
1.2 ATE/VDO Electronic systems of today and tomorrow	9
<b>2 Technical training for ATE Brake Center (BC)</b>	
2.1 BC Maintenance and servicing of modern brake systems	10
2.2 BC Service and diagnosis of modern brake systems	11
2.3 BC Basics of electric systems in practice using ATE/VDO as an example	12
2.4 BC Systematic troubleshooting on ABS systems	13
2.5 BC Electronic diagnosis and servicing of driving dynamics systems	14
<b>3 Technical training for automotive workshops</b>	
3.1 Maintenance and servicing of modern brake systems	15
3.2 Service and diagnosis of modern brake systems	16
3.3 Basics of electric systems in practice using ATE/VDO as an example	17
3.4 Systematic troubleshooting on ABS systems	18
3.5 Electronic diagnosis and servicing of driving dynamics systems	19
<b>4 Training for ATE partners</b>	
4.1 ATE product training	20
4.2 ATE tools, servicing and diagnosis devices	21
4.3 Warranty – use as an opportunity	22
<b>5 Special training</b>	
5.1 Tyre assembling courses on offer (Continental Reifen Deutschland GmbH)	23
5.2 Automotive timing belts - Automotive Aftermarket (Power Transmission Group)	24
5.3 Practical training: Changing an automotive timing belt Power Transmission Group - Automotive Aftermarket	25
5.4 Hybrid vehicles – an opportunity for the workshop	26
5.5 Qualification for working on high-voltage production vehicles	27
5.6 Diagnosis of comfort and data bus systems	28
5.7 Train the trainer	29
<b>Continental Aftermarket Training Team</b>	<b>30</b>
<b>General conditions</b>	<b>32</b>
<b>How to get there</b>	<b>33</b>

# Types of training courses

**Effective training requires training that responds to specific needs. The Continental Aftermarket TrainingsCenter offers you a wide range of different training courses to this end, as listed here:**

## **A half-day information event on site**

- 1.1 ATE/VDO Into the future with success
  - 1.2 ATE/VDO Electronic systems of today and tomorrow
  - 5.2 ContiTech Product training – Automotive timing belts
  - 5.4 Hybrid vehicles – an opportunity for the workshop
- Duration: approx. 2.5 h, preferably evenings

## **B Special training courses for our ATE Brake Center**

- 2.1 BC Maintenance and servicing of modern brake systems
  - 2.2 BC Service and diagnosis of modern brake systems
  - 2.3 BC Basics of electric systems in practice using ATE/VDO as an example
  - 2.4 BC Systematic troubleshooting on ABS systems
  - 2.5 BC Electronic diagnosis and servicing of driving dynamics systems
- Duration: 1 to 2 days

## **C Workshop partner training courses in Eschborn or on site**

- 3.1 Maintenance and servicing of modern brake systems
  - 3.2 Service and diagnosis of modern brake systems
  - 3.3 Basics of electric systems in practice using ATE/VDO as an example
  - 3.4 Systematic troubleshooting on ABS systems
  - 3.5 Electronic diagnosis and servicing of driving dynamics systems
- Duration: 1 to 2 days

## **D Special training courses for our ATE partners**

- 4.1 ATE Product training
  - 4.2 ATE tools, servicing and diagnosis devices
  - 4.3 ATE warranty – use as an opportunity
- Duration: 1 day

## **E Special training courses in Eschborn or on site**

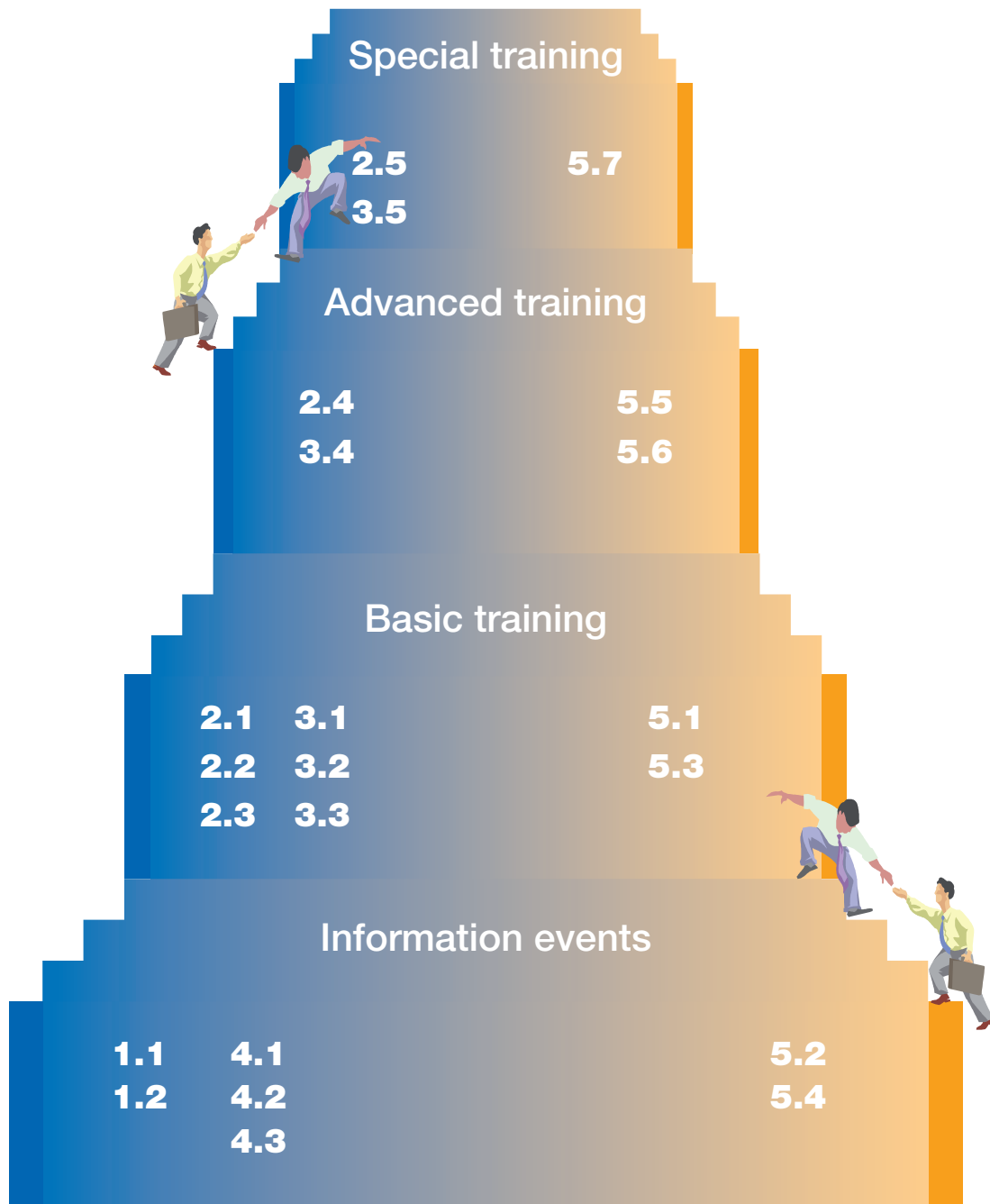
- 5.1 Continental Reifen Deutschland GmbH – Tyre assembling courses on offer
- 5.2 ContiTech Product training – Automotive timing belts - Automotive Aftermarket
- 5.3 ContiTech technical training – Changing an automotive timing belt Power Transmission Group - Automotive Aftermarket
- 5.4 Hybrid vehicles – an opportunity for the workshop
- 5.5 Qualification for working on high-voltage production vehicles
- 5.6 Diagnosis of comfort and data bus systems
- 5.7 Train the trainer

## **F Individual training and coaching on site**

- Customer-oriented training by arrangement

# Continental Training System

## Leading the way



Training modules that work in perfect harmony  
with each other!



VDO



# Administration and registration

## Visitor address:

Continental Aftermarket GmbH  
TrainingsCenter  
APPM department  
Helfmann-Park 1  
D-65760 Eschborn (Taunus)  
TrainingsCenter@continental-corporation.com  
continental-automotive.com

## Postal address:

Continental Aftermarket GmbH  
TrainingsCenter  
APPM department  
P.O. Box 90 01 20  
D-60441 Frankfurt am Main  
TrainingsCenter@continental-corporation.com www.  
www.continental-automotive.com



**Arja Brümmer**

Administration  
arja.bruemmer@continental-corporation.com  
Ph.: +49 69 7603-4200  
Fax: +49 69 7603-3913



**Silke Vester**

Administration  
silke.vester@continental-corporation.com  
Ph.: +49 69 7603-8312  
Fax: +49 69 7603-3913

# Contact data and contact persons

## **Training for ATE Brake Center**

Contact persons: Arja Brümmer (+49 69 7603-4200) and Silke Vester (+49 69 7603-8312)  
Dates: Are sent in November of the previous year and published at  
[www.ate/Service/ATETrainingsCenter](http://www.ate/Service/ATETrainingsCenter)  
Booking: Fax: +49 69-7603-3979  
E-mail: [TrainingsCenter@continental-corporation.com](mailto:TrainingsCenter@continental-corporation.com)

## **Training for automotive workshops**

Contact person: ATE sales partner via ATE field staff member  
Dates: Are published by the ATE sales partners  
Refer to the training program of the sales partners.  
Booking: Individual invitations from the sales partner

## **Individual training courses and coaching**

Contact person: Arja Brümmer (+49 69 7603-4200)  
Dates: Are arranged on a case-by-case basis  
Queries: Fax: +49 69 7603-3979  
E-mail: [TrainingsCenter@continental-corporation.com](mailto:TrainingsCenter@continental-corporation.com)

## **Continental ContiTech training courses**

Contact person: Kai-Uwe Suppé  
Scheduling: Ph.: +49 511 938-50036  
Fax: +49 511 938-5233  
E-mail: [kai-uwe.suppee@ptg.contitech.de](mailto:kai-uwe.suppee@ptg.contitech.de)

## **Continental tire training courses**

Contact person: Daniel Marberg  
Scheduling: Ph.: +49 511 938-2064 or -2980  
Fax: +49 511 938-2010  
E-mail: [Daniel.Marberg@conti.de](mailto:Daniel.Marberg@conti.de)

You can find the training program at [www.ate/Service/ATETrainingsCenter](http://www.ate/Service/ATETrainingsCenter) or order it by e-mail:  
[TrainingsCenter@continental-corporation.com](mailto:TrainingsCenter@continental-corporation.com).



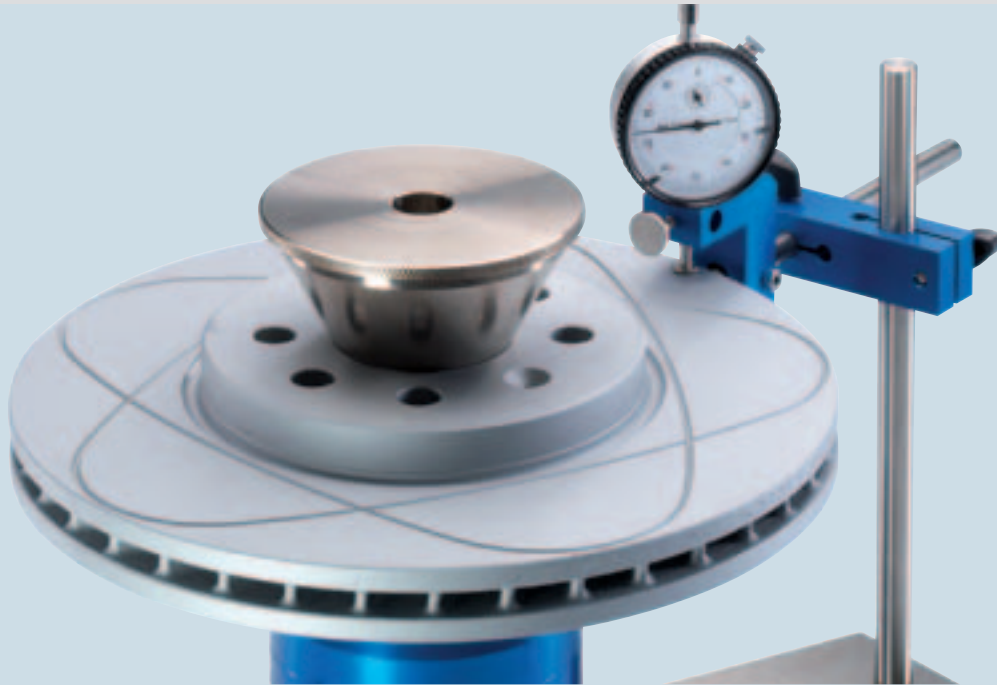
## 1.1 ATE/VDO Into the future with success

<b>Target group:</b>	Owners and staff of independent and branded workshops				
<b>Training goals:</b>	<p>Creating technical and commercial status</p> <p>Getting to know product characteristics and advantages</p> <p>Recognizing opportunities on the market, Marketing products successfully</p>				
<b>Training content:</b>	<p>Market information</p> <p>The future of the independent workshop</p> <p>Earning money today and tomorrow</p> <p>Being successful together</p> <p>Modern brake systems in the passenger car</p> <p>VDO products New technologies</p>				
<b>Training duration:</b>	approx. 2.5 h, preferably evenings				
<b>Prerequisites:</b>	Completion of training in an automotive profession or at least 3 years of professional experience.				
<b>Training fee:</b>	€30.00 per participant				
<b>No. of participants:</b>	<table> <tr> <td>Min.:</td> <td>30</td> </tr> <tr> <td>Max.:</td> <td>50</td> </tr> </table>	Min.:	30	Max.:	50
Min.:	30				
Max.:	50				



## 1.2 ATE/VDO Electronic systems of today and tomorrow

<b>Target group:</b>	Owners and staff of independent and branded workshops
<b>Training goals:</b>	Getting to know the current state of technology Acquiring basic knowledge about ABS, ESP, EHB and EPB Trends in the automotive industry Recognizing the advantages of brake tools
<b>Training content:</b>	Innovations in the automobile world Workshop qualification for new systems Electronic brake systems from Continental Teves Basic structure and basic function of ABS, ESP, EHB and EPB Diagnostic devices and tools for checking the electronic systems Ventilating vehicles with ABS
<b>Training duration:</b>	approx. 2.5 h, preferably evenings
<b>Prerequisites:</b>	Completion of training in an automotive profession or at least 3 years of professional experience.
<b>Training fee:</b>	€30.00 per participant
<b>No. of participants:</b>	Min.: 30 Max.: 50



## 2.1 BC Maintenance and servicing of modern brake systems

<b>Target group:</b>	Owners and employees of the ATE Brake Center
<b>Training goals:</b>	Comprehension of the structure and function of brake systems Servicing the brake systems in accordance with regulations Checking the brake system in accordance with regulations Using ATE tools and servicing devices professionally
<b>Training content:</b>	Statutory regulations for the main test Structure and operating method of brake systems Repairing brake systems in a professional manner Bleeding hydraulic brake and ABS systems Checking brake systems Using brake servicing devices and tools correctly
<b>Training duration:</b>	2 days
<b>Prerequisites:</b>	Completion of training in an automotive profession or at least 3 years of professional experience.
<b>Training fee:</b>	As specified in ATE Brake Center contract
<b>No. of participants:</b>	Min.: 10 Max.: 12



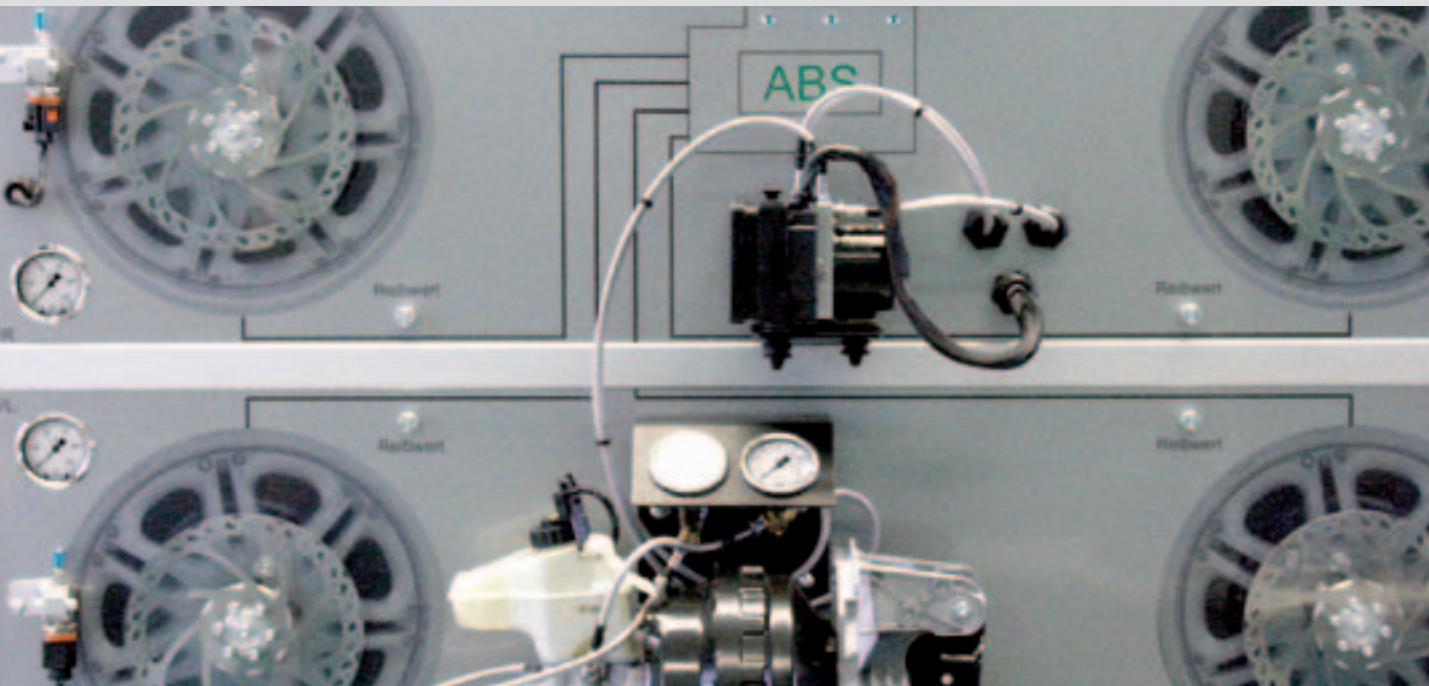
## 2.2 BC Service and diagnosis of modern brake systems

<b>Target group:</b>	Owners and employees of the ATE Brake Center				
<b>Training goals:</b>	<ul style="list-style-type: none"> <li>Servicing and diagnosing modern brake systems</li> <li>Restoring service interval displays</li> <li>Changing brake fluids correctly</li> <li>Servicing electrical park brake systems</li> </ul>				
<b>Training content:</b>	<ul style="list-style-type: none"> <li>Checking hydraulic brakes</li> <li>Remedying brake noises and vibrations</li> <li>Diagnosing chassis and brake components</li> <li>Function and operating method of electrical EPB park brakes</li> <li>Structure of the electrohydraulic SBC brake ( MB E class W211)</li> <li>Servicing and diagnosing electrohydraulic brakes</li> <li>Diagnosing ESP sensors and TPMS</li> </ul>				
<b>Training duration:</b>	1 day				
<b>Prerequisites:</b>	Completion of training in an automotive profession or at least 3 years of professional experience.				
<b>Training fee:</b>	As specified in ATE Brake Center contract				
<b>No. of participants:</b>	<table> <tr> <td>Min.:</td> <td>10</td> </tr> <tr> <td>Max.:</td> <td>12</td> </tr> </table>	Min.:	10	Max.:	12
Min.:	10				
Max.:	12				



## 2.3 BC Basics of electric systems in practice using ATE/VDO as an example

<b>Target group:</b>	Owners and employees of the ATE Brake Center
<b>Training goals:</b>	Reading the basics of measuring technology and circuit diagrams correctly Measuring and evaluating sensors Using diagnostic devices correctly Battery management and interpreting error codes
<b>Training content:</b>	Reading circuit diagrams Developing the basics of measuring technology Practical measurement exercises on ATE and VDO sensors Using diagnosis devices Interpreting measurement results and error codes Special features of the battery management systems
<b>Training duration:</b>	2 days
<b>Prerequisites:</b>	Completion of training in an automotive profession or at least 3 years of professional experience, and <b>successful participation</b> in Training 2.1 BC Maintenance and servicing of modern brake systems
<b>Training fee:</b>	As specified in ATE Brake Center contract
<b>No. of participants:</b>	Min.: 10 Max.: 12



## 2.4 BC Systematic troubleshooting on ABS systems

<b>Target group:</b>	Owners and employees of the ATE Brake Center				
<b>Training goals:</b>	<ul style="list-style-type: none"> <li>Comprehension of the structure and function of ABS systems</li> <li>Reading circuit diagrams</li> <li>Interpreting errors</li> <li>Using tools and servicing devices professionally</li> </ul>				
<b>Training content:</b>	<ul style="list-style-type: none"> <li>Structure and function of ABS, ASR, EDS and EBV</li> <li>Reading out the flash code</li> <li>Troubleshooting the system</li> <li>Exercises with ABS models</li> <li>Creating the quick test list</li> <li>Measurement exercises with diagnosis devices</li> <li>Coding the ABS control unit</li> </ul>				
<b>Training duration:</b>	2 days				
<b>Prerequisites:</b>	Completion of training in an automotive profession or at least 3 years of professional experience, and <b>successful participation</b> in Training <b>2.3 BC Basics of electric systems in practice using ATE/VDO as an example</b>				
<b>Training fee:</b>	As specified in ATE Brake Center contract				
<b>No. of participants:</b>	<table> <tr> <td>Min.:</td> <td>10</td> </tr> <tr> <td>Max.:</td> <td>12</td> </tr> </table>	Min.:	10	Max.:	12
Min.:	10				
Max.:	12				



## 2.5 BC Electronic diagnosis and servicing of driving dynamics systems

<b>Target group:</b>	Owners and employees of the ATE Brake Center
<b>Training goals:</b>	Getting to know the ATE and external brake systems Performing professional measurements on electronic systems Systematic troubleshooting CAN bus: Basics and possible diagnoses
<b>Training content:</b>	Structure and function of ATE ABS systems Structure and function of external ABS systems Measurement exercises on ABS components with an oscilloscope Usage, opportunities and limits of diagnosis devices Diagnosis flash codes Quick test lists and detailed tests
<b>Training duration:</b>	2 days
<b>Prerequisites:</b>	Completion of training in an automotive profession or at least 3 years of professional experience, and <b>successful participation</b> in Training 2.4 BC Systematic troubleshooting on ABS systems
<b>Training fee:</b>	As specified in ATE Brake Center contract
<b>No. of participants:</b>	Min.: 10 Max.: 12



### 3.1 Maintenance and servicing of modern brake systems

<b>Target group:</b>	Owners and staff of independent and branded workshops				
<b>Training goals:</b>	<p>Comprehension of the structure and function of brake systems</p> <p>Servicing the brake systems in accordance with regulations</p> <p>Checking the brake system in accordance with regulations</p> <p>Using ATE tools and servicing devices professionally</p>				
<b>Training content:</b>	<p>Statutory regulations for the main test</p> <p>Structure and operating method of brake systems</p> <p>Repairing brake systems in a professional manner</p> <p>Ventilating hydraulic brake and ABS systems</p> <p>Checking brake systems</p> <p>Using brake servicing devices and tools correctly</p>				
<b>Training duration:</b>	2 days				
<b>Prerequisites:</b>	Completion of training in an automotive profession or at least 3 years of professional experience.				
<b>Training fee:</b>	€360.00 per participant				
<b>No. of participants:</b>	<table> <tr> <td>Min.:</td> <td>10</td> </tr> <tr> <td>Max.:</td> <td>12</td> </tr> </table>	Min.:	10	Max.:	12
Min.:	10				
Max.:	12				



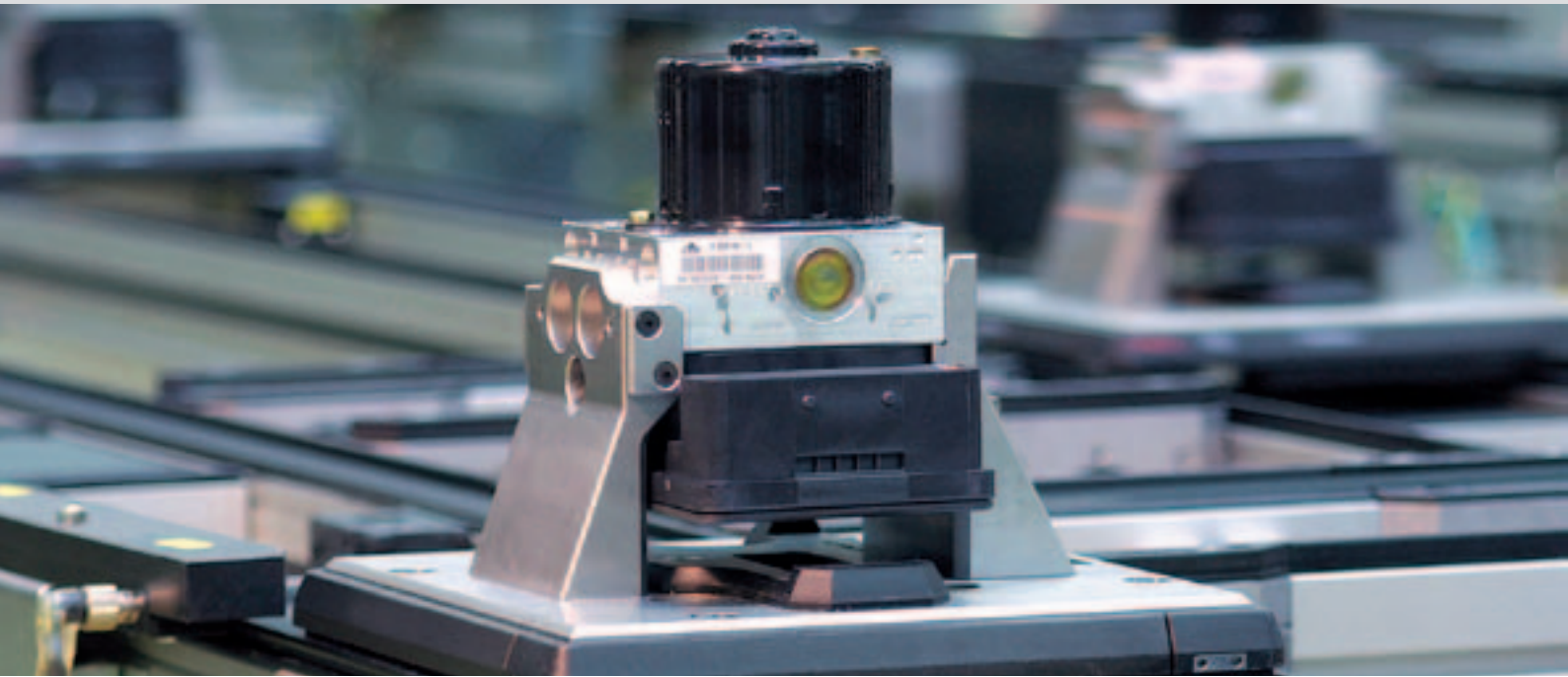
### 3.2 Service and diagnosis of modern brake systems

<b>Target group:</b>	Owners and staff of independent and branded workshops
<b>Training goals:</b>	Servicing and diagnosing modern brake systems Restoring service interval displays Changing brake fluids correctly Servicing electrical park brake systems
<b>Training content:</b>	Checking hydraulic brakes Remedying brake noises and vibrations Diagnosing chassis and brake components Function and operating method of electrical EPB park brakes Structure of the electrohydraulic SBC brake (MB E class W211) Servicing and diagnosing electrohydraulic brakes Diagnosing ESP sensors and TPMS
<b>Training duration:</b>	1 day
<b>Prerequisites:</b>	Completion of training in an automotive profession or at least 3 years of professional experience.
<b>Training fee:</b>	€180.00 per participant
<b>No. of participants:</b>	Min.: 10 Max.: 12



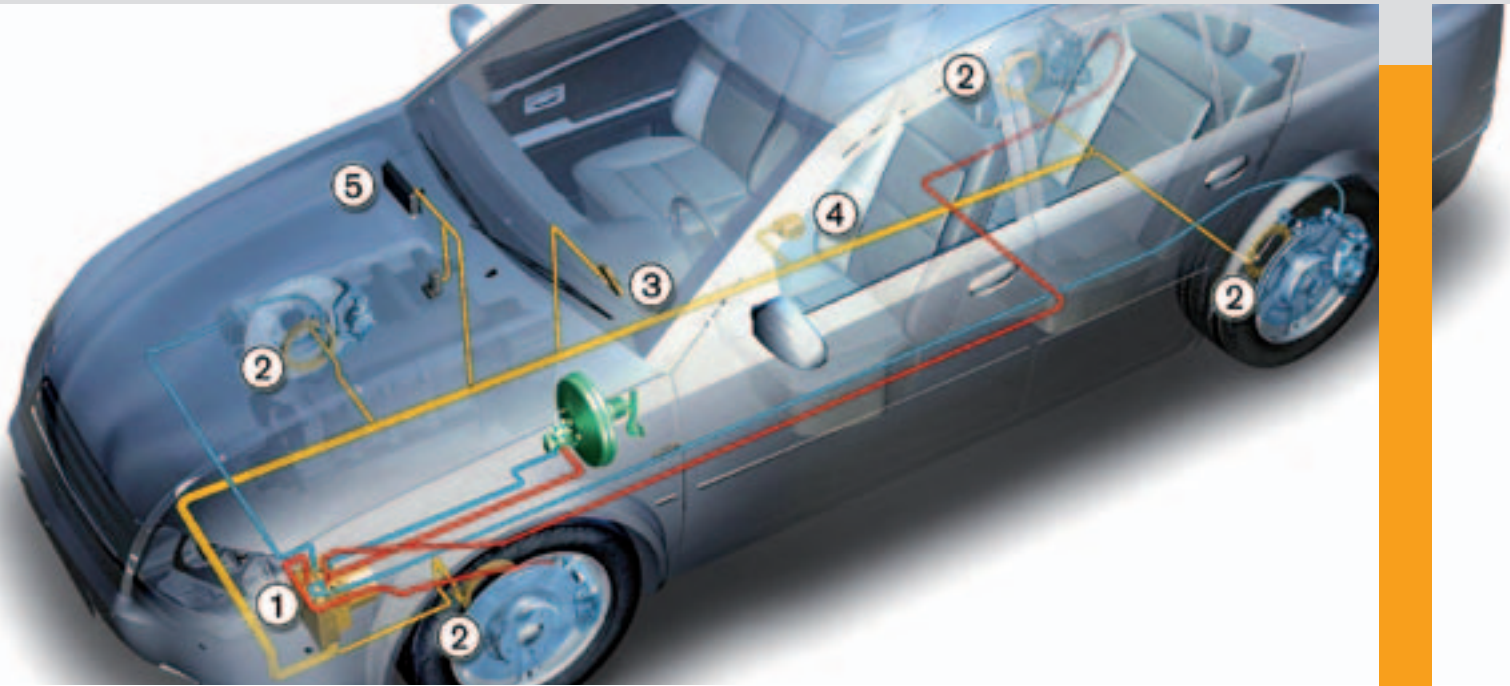
### 3.3 Basics of electric systems in practice using ATE/VDO as an example

<b>Target group:</b>	Owners and staff of independent and branded workshops				
<b>Training goals:</b>	<ul style="list-style-type: none"> <li>Reading the basics of measuring technology and circuit diagrams correctly</li> <li>Measuring and evaluating sensors</li> <li>Using diagnostic devices correctly</li> <li>Battery management and interpreting error codes</li> </ul>				
<b>Training content:</b>	<ul style="list-style-type: none"> <li>Reading circuit diagrams</li> <li>Developing the basics of measuring technology</li> <li>Practical measurement exercises on ATE and VDO sensors</li> <li>Using diagnosis devices</li> <li>Interpreting measurement results and error codes</li> <li>Special features of the battery management systems</li> </ul>				
<b>Training duration:</b>	2 days				
<b>Prerequisites:</b>	Completion of training in an automotive profession or at least 3 years of professional experience, and <b>we recommend successful participation</b> in Training <b>3.1 Maintenance and servicing of modern brake systems</b>				
<b>Training fee:</b>	€360.00 per participant				
<b>No. of participants:</b>	<table style="width: 100%; border: none;"> <tr> <td style="width: 50%;">Min.:</td> <td style="width: 50%;">10</td> </tr> <tr> <td>Max.:</td> <td>12</td> </tr> </table>	Min.:	10	Max.:	12
Min.:	10				
Max.:	12				



### 3.4 Systematic troubleshooting on ABS systems

<b>Target group:</b>	Owners and staff of independent and branded workshops
<b>Training goals:</b>	Comprehension of the structure and function of ABS systems Reading circuit diagrams Interpreting errors Using tools and servicing devices professionally
<b>Training content:</b>	Structure and function of ABS, ASR, EDS and EBV Reading out the flash code Troubleshooting with system Exercises with ABS models Creating the quick test list Measurement exercises with diagnosis devices Coding the ABS control unit
<b>Training duration:</b>	2 days
<b>Prerequisites:</b>	Completion of training in an automotive profession or at least 3 years of professional experience, and <b>we recommend successful participation</b> in Training <b>3.3 Basics of electric systems in practice using ATE/VDO as an example</b>
<b>Training fee:</b>	€360.00 per participant
<b>No. of participants:</b>	Min.: 10 Max.: 12



### 3.5 Electronic diagnosis and servicing of driving dynamics systems

<b>Target group:</b>	Owners and staff of independent and branded workshops
<b>Training goals:</b>	Getting to know the ATE and external brake systems Performing professional measurements on electronic systems Systematic troubleshooting CAN bus: Basics and possible diagnoses
<b>Training content:</b>	Structure and function of ATE ABS systems Structure and function of external ABS systems Measurement exercises on ABS components with an oscilloscope Usage, opportunities and limits of diagnosis devices Diagnosis flash codes Quick test lists and detailed tests
<b>Training duration:</b>	2 days
<b>Prerequisites:</b>	Completion of training in an automotive profession or at least 3 years of professional experience, and <b>we recommend successful participation</b> in Training <b>3.4 Systematic troubleshooting on ABS systems</b>
<b>Training fee:</b>	€360.00 per participant
<b>No. of participants:</b>	Min.: 10 Max.: 12





## 4.2 ATE tools, servicing and diagnosis devices

<b>Target group:</b>	Employees of the ATE Brake Center and sales partners				
<b>Training goals:</b>	<p>Explaining how to use the tools, service and diagnosis devices correctly</p> <p>Explaining the tools, service and diagnosis devices in usage</p> <p>Showing the benefit of the tools, service and diagnosis devices</p>				
<b>Training content:</b>	<p>Brake service devices in practical use</p> <p>Tools in practical use</p> <p>Sales arguments for all ATE brake service devices</p> <p>Sales arguments for all ATE tools and diagnosis devices</p> <p>Online catalogs</p>				
<b>Training duration:</b>	1 day				
<b>Prerequisites:</b>	Completion of training in an automotive profession or at least 3 years of professional experience.				
<b>Training fee:</b>	€180.00 per participant				
<b>No. of participants:</b>	<table> <tr> <td>Min.:</td> <td>15</td> </tr> <tr> <td>Max.:</td> <td>20</td> </tr> </table>	Min.:	15	Max.:	20
Min.:	15				
Max.:	20				



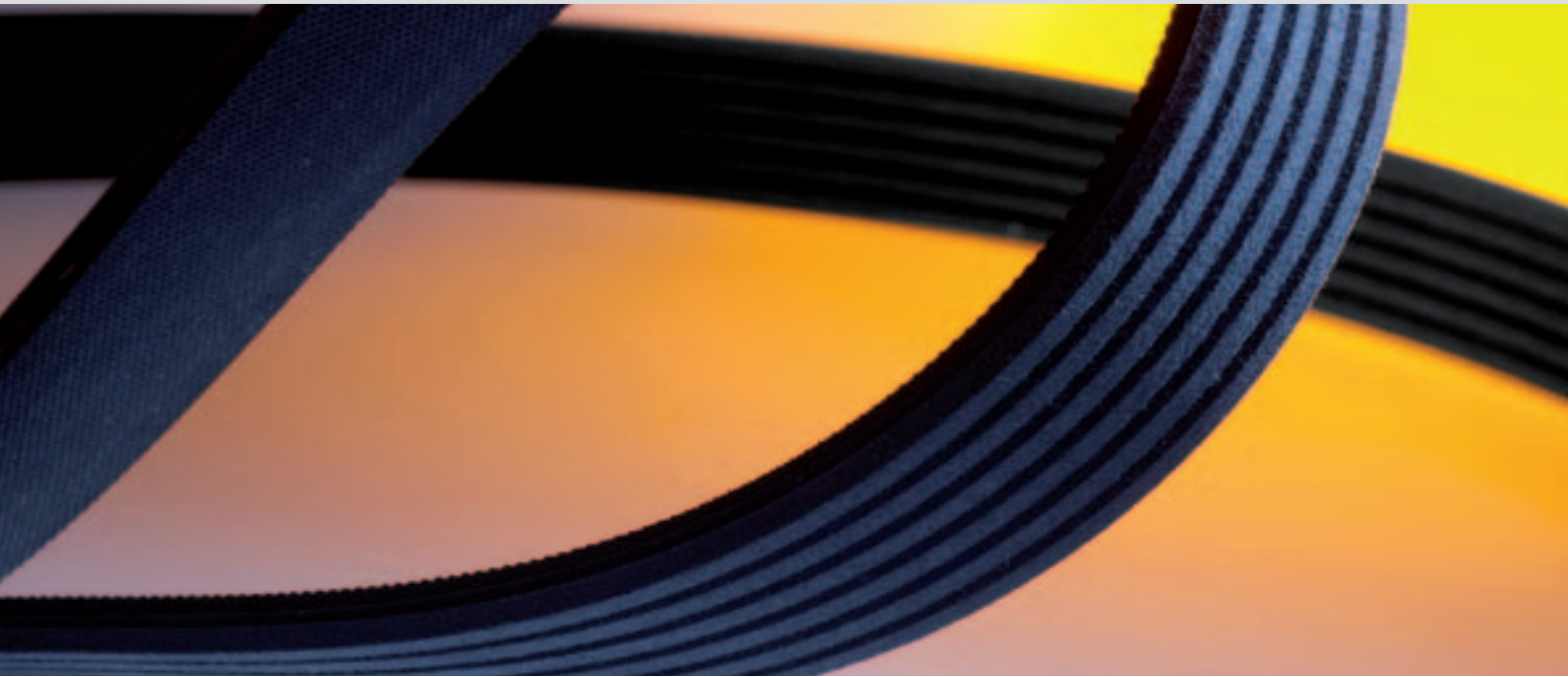
### 4.3 Warranty – use as an opportunity

<b>Target group:</b>	Warranty employees of ATE/VDO sales partners				
<b>Training goals:</b>	<ul style="list-style-type: none"> <li>Knowing the legal background information about warranties</li> <li>Being able to evaluate ATE/VDO parts</li> <li>Dealing with warranty claims</li> <li>Seeing warranties as an opportunity</li> </ul>				
<b>Training content:</b>	<ul style="list-style-type: none"> <li>Recognizing warranty – guarantee – goodwill</li> <li>Getting to know the legal regulations</li> <li>Evaluating ATE/VDO products</li> <li>Practical exercises for the complete process</li> <li>Limits of the warranty</li> <li>Warranty as a customer loyalty instrument</li> </ul>				
<b>Training duration:</b>	1 day				
<b>Prerequisites:</b>	<ul style="list-style-type: none"> <li>Completion of training in an automotive profession or at least 3 years of professional experience</li> <li>Employed by an ATE/VDO sales partner</li> </ul>				
<b>Training fee:</b>	€180.00 per participant, no charge for sales partners				
<b>No. of participants:</b>	<table border="0" style="margin-left: 20px;"> <tr> <td>Min.:</td> <td>10</td> </tr> <tr> <td>Max.:</td> <td>12</td> </tr> </table>	Min.:	10	Max.:	12
Min.:	10				
Max.:	12				



## 5.1 Tyre assembling courses offered by Continental Reifen Deutschland GmbH

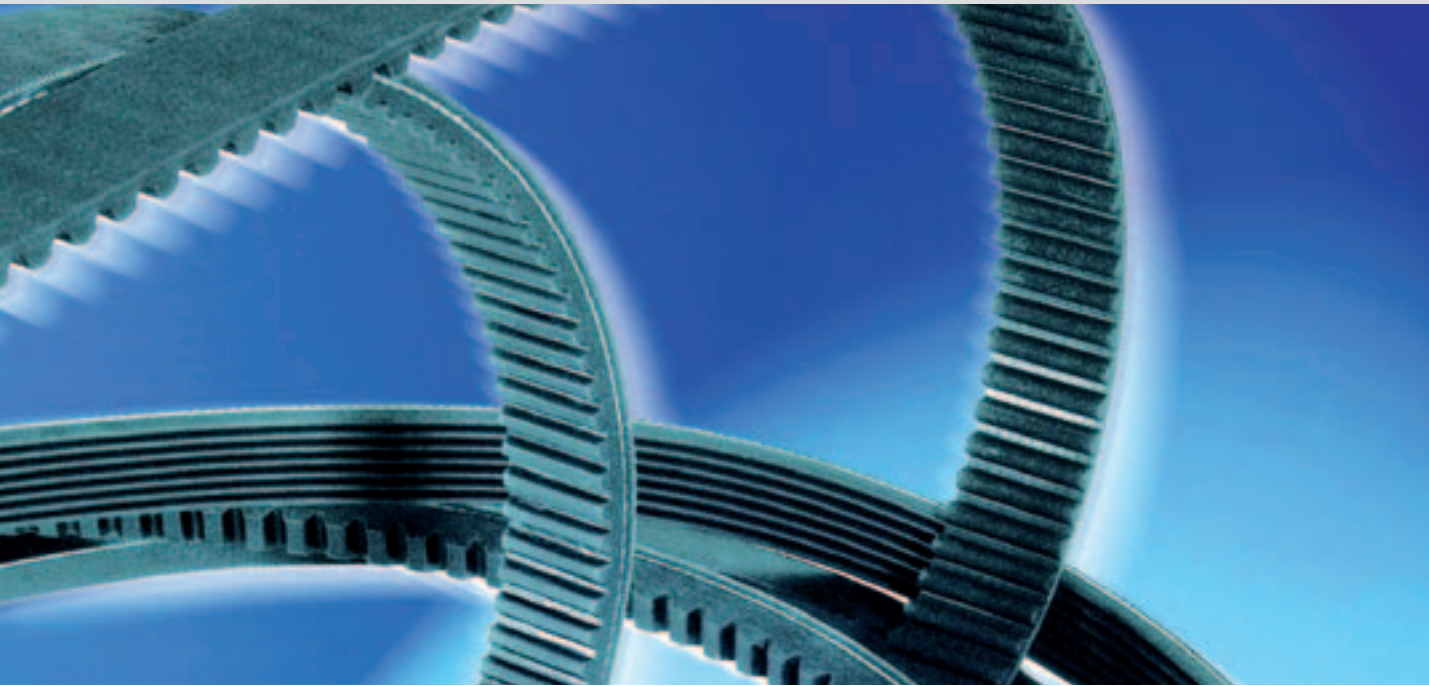
<b>Target group:</b>	New staff as well as experienced workshop employees
<b>Training courses:</b>	<ul style="list-style-type: none"> <li>• <b>The basics of tire technology:</b> Focuses on cars, provides broad fundamental knowledge in theory and practice for persons new to the field.</li> <li>• Fitter training (basics): Focuses on cars, provides fundamental knowledge, in theory and practice, for people launching their careers and for new staff</li> <li>• <b>Fitter training for fitting and removing UHP and runflat tires:</b> With test (German Rubber Industry Association certificate - wdk), training for participants who have completed an education in an automotive profession or with at least 3 years practical experience in tire fitting</li> <li>• <b>Fitter training (advanced):</b> Elimination of running irregularities on the vehicle (practical tips and tricks), advanced course for participants who have completed Fitter training - basics or for participants with extensive practical experience in tire fitting</li> <li>• <b>Wide-base tires / chassis technology:</b> Learning and experiencing (theory and practice, including driving exercises with wide-base tires at the Contidrom), participants must have already completed the training: The basics of tire technology / cars</li> <li>• <b>Axle alignment:</b> Basics of chassis geometry, training for technicians in the workshop. Practice-oriented advanced knowledge of chassis alignment and expansions of expertise for sales talks</li> <li>• <b>Truck tires:</b> Theoretical and practical tire basics, training for workshop technicians and sales staff</li> <li>• <b>Truck tires:</b> Consumer training in theory and practice for fleet managers, workshop foremen and technical fleet staff</li> </ul>
<b>Further information:</b>	<p>Continental Reifen Deutschland GmbH  Tires unit  Büttnerstrasse 25  D-30165 Hanover  Ph.: +49 511 938-2064 or -2980</p>



## 5.2 Automotive timing belts

### Power Transmission Group – Automotive Aftermarket

<b>Target group:</b>	Owners and staff of independent and branded workshops
<b>Training goals:</b>	Advantages of timing belts compared with chains Necessity and use of water pump kits Installation and failure patterns, torsional vibration damper (TVD) or torsional vibration damper isolator (TVDI) Properties and installation of „Elast“ V-ribbed belts Use and functions of the tool box
<b>Training content:</b>	Handling and installation of timing belts Safety tips: Assembly instructions for timing belts Using the tension tester <ul style="list-style-type: none"><li>• Advantages, function and application examples for the tension tester</li><li>• Failure patterns of timing belts</li><li>• Practical depiction and explanation of causes of belt failure</li></ul>
<b>Training duration:</b>	approx. 2.5 h, preferably evenings
<b>Prerequisites:</b>	Completion of training in an automotive profession or at least 3 years of professional experience.
<b>Training location:</b>	by arrangement



### 5.3 Practical training: Changing an automotive timing belt Power Transmission Group – Automotive Aftermarket

<b>Target group:</b>	Owners and staff of independent and branded workshops
<b>Training goals:</b>	Changing the timing belt on six different car engines. Necessity and use of water pump kits Installation and failure patterns, torsional vibration damper (TVD) or torsional vibration damper isolator (TVDI) Properties and installation of „Elast“ V-ribbed belts Use and functions of the tool box
<b>Training content:</b>	Handling and installation of timing belts Safety tips: Assembly instructions for timing belts Using the tension tester <ul style="list-style-type: none"><li>• Advantages, function and application examples for the tension tester</li><li>• Failure patterns of timing belts</li><li>• Practical depiction and explanation of causes of belt failure</li></ul>
<b>Training duration:</b>	1 day
<b>Prerequisites:</b>	Completion of training in an automotive profession or at least 3 years of professional experience.
<b>Training fee:</b>	€169.00 per participant
<b>No. of participants:</b>	Min.: 10 Max.: 12



Photo source: Renault Deutschland GmbH

## 5.4 Hybrid vehicles – an opportunity for the workshop

<b>Target group:</b>	Owners and staff of independent and branded workshops				
<b>Training goals:</b>	<p>Certification: Person trained in electronics (EuP-HV) for working on vehicles with high-voltage systems.</p> <p>Recognizing the hazard potential of high-voltage technology</p> <p>Legal regulations laid down in BGV A3, BGI 8686, VDE 0105-100 and VDE 1000-10</p> <p>Getting to know the current range of hybrid vehicles</p> <p>Understanding the types of hybrid drives and battery technology</p> <p>Environmental performance of hybrid vehicles</p> <p>Legal and manufacturer regulations</p>				
<b>Training content:</b>	<p>Different hybrid drives and their manufacturers</p> <p>The idea of hybrid drives and the environment</p> <p>Legal instruction in accordance with BGV A3, BGI 8686, VDE 0105-100 and VDE 1000-10</p> <p>Hazard potential and responsibility in the workshop</p> <p>Impact of hybrid vehicles on workshops</p> <p>First aid, protective measures and areas of activity as an EuP</p>				
<b>Training duration:</b>	approx. 2.5 h, preferably evenings				
<b>Prerequisites:</b>	Completion of training in an automotive profession or at least 3 years of professional experience.				
<b>Training fee:</b>	€30.00 per participant				
<b>No. of participants:</b>	<table border="0" style="width: 100%;"> <tr> <td style="width: 50%;">Min.:</td> <td style="text-align: right;">10</td> </tr> <tr> <td>Max.:</td> <td style="text-align: right;">20</td> </tr> </table>	Min.:	10	Max.:	20
Min.:	10				
Max.:	20				



## 5.5 Qualification for working on high-voltage production vehicles

<b>Target group:</b>	Independent and branded workshop owners and staff with at least one mechanic training				
<b>Training goals:</b>	<p>Certification as an expert for working on high-voltage intrinsically safe systems</p> <p>Training for authorization to work on hybrid and other high-voltage systems in automobiles</p> <p>Recognizing the hazard potential of high-voltage technology</p> <p>Legal regulations in accordance with BGV A3, BGI 8686, VDE 0105-100 and VDE 1000-10</p>				
<b>Training content:</b>	<p>Specialist responsibility</p> <p>Electrical hazards and first aid</p> <p>Protective measures against electrical shocks to the body and electric arcs</p> <p>Electrical systems and operating equipment in accordance with BG/GUV-V A3 and VDE 0105-100</p> <p>High-voltage concepts and vehicle technology</p> <p>Practical implementation in the workshop</p> <p>Basic knowledge of electrotechnology</p>				
<b>Training duration:</b>	2 days				
<b>Prerequisites:</b>	<p>Automobile mechanic, automobile electrician and automobile mechatronics engineer with a training qualification acquired after 1973</p> <p>Vehicle body and vehicle construction mechanic, or mechanic for vehicle body repair technology with a training qualification acquired after 2002</p> <p>People who can provide evidence of suitable additional training as an automobile service technician or master technician</p> <p>We recommend successful participation in Training 2.3/3.3 Basics of electric systems in practice using ATE/VDO as an example</p>				
<b>Training fee:</b>	€400.00 per participant				
<b>No. of participants:</b>	<table> <tr> <td>Min.:</td> <td>6</td> </tr> <tr> <td>Max.:</td> <td>12</td> </tr> </table>	Min.:	6	Max.:	12
Min.:	6				
Max.:	12				



## 5.6 Diagnosis of comfort and data bus systems

<b>Target group:</b>	Owners and staff of independent and branded workshops				
<b>Training goal:</b>	The use of data bus systems in comfort electronics has become standard, which has also changed the diagnosis strategies. The training is designed to illustrate the functional connections in the bus-controlled comfort electronics, and show the procedure for performing troubleshooting in theoretical and practical exercises.				
<b>Training content:</b>	<ul style="list-style-type: none"> <li>Learning a structured diagnosis</li> <li>Electrical diagnosis on models and vehicles</li> <li>Reading and interpreting lists of measured values</li> <li>Interpretation of error codes and eliminating the cause</li> <li>Handling modern diagnosis devices</li> </ul>				
<b>Training duration:</b>	1 day				
<b>Prerequisites:</b>	Completion of training in an automotive profession or at least 3 years of professional experience.				
<b>Training fee:</b>	€180.00 per participant				
<b>No. of participants:</b>	<table> <tr> <td>Min.:</td> <td>6</td> </tr> <tr> <td>Max.:</td> <td>12</td> </tr> </table>	Min.:	6	Max.:	12
Min.:	6				
Max.:	12				



## 5.7 Train the trainer

<b>Target group:</b>	Trainers
<b>Training goal:</b>	By individual arrangement with the Continental Aftermarket Training Center
<b>Training content:</b>	The training program consists of several individual measures (modules) and is tailored to the needs of the participants.
<b>Training duration:</b>	Arranged individually



## Continental Aftermarket Training Team



**Bert C. Lembens**

Head of TrainingsCenter  
bert.lembens@continental-corporation.com  
Ph.: +49 69 7603-2099  
Fax: +49 69 7603-3913



**Tobias Stephan**

Trainer and Coordination  
tobias.1.stephan@continental-corporation.com  
Ph.: +49 69 7603-4665  
Fax: +49 69 7603-3913



**Pablo Llorente**

Trainer  
pablo.llorente@continental-corporation.com  
Ph.: +49 69 7603-4179  
Fax: +49 69 7603-3913

# Continental Aftermarket Training Team



**Sebastian Matuschek**

Trainer  
sebastian.matuschek@continental-corporation.com  
Ph.: +49 69 7603-3078  
Fax: +49 69 7603-3913



**Klaus Michaelis**

Trainer  
klaus.michaelis@continental-corporation.com  
Ph.: +49 69 7603-3737  
Fax: +49 69 7603-3913



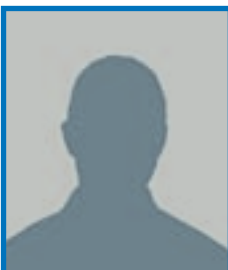
**Anton De Coster, France**

Trainer  
anton.de-coster@continental-corporation.com  
Ph.: +49 69 7603-4200  
Fax: +49 69 7603-3913



**Doug Rennie, Great Britain**

Trainer  
doug.rennie@ptg.contitech.co.uk  
Ph.: +49 69 7603-4200  
Fax: +49 69 7603-3913



**N.N., Italy**

Trainer  
  
Ph.: +49 69 7603-4200  
Fax: +49 69 7603-3913

# General conditions:

<b>Training times:</b>	from 9am to approx. 5pm; to approx. 3pm on last day
<b>Training content:</b>	The content of the training courses may vary depending on the participants' requirements.
<b>Training certificate:</b>	In the case of training courses that last at least 1 day, the participants receive a certificate directly from Continental Aftermarket.
<b>Cancellation of training:</b>	From 3 weeks before the date, 50% of the fee will be charged; from 1 week before the date, the full fee will be charged.
<b>Minimum number of participants:</b>	We reserve the right to charge the training fees if the minimum number of participants is undershot by 50%.

## Individual training and coaching on site:

The general conditions apply. For training sessions held in locations other than the Continental TrainingsCenter, the following conditions must be met:

1. The size of the room where the theory element is taught depends on the type of training and the number of participants. A reference value for training courses with practical exercises is 100 m<sup>2</sup>.
2. For practical training courses, a vehicle workshop with a lifting platform and a brake test stand is required in addition to the room where the theory element is taught.
3. A projector, a screen and a flip chart are required.
4. When scheduling a training course, the days spent traveling to and from the location, as well as the time spent setting up and dismantling the training equipment are to be taken into consideration.
5. In the case of consecutive training courses, the training locations must not be further than 150 km from each other as the time spent setting up and dismantling the equipment as well as the actual training time must be taken into consideration.
6. All prices are exclusive of statutory VAT. For customer-specific training courses, the daily fee in Germany is €1,300.00.  
This price contains the trainer's fee and travel costs as well as the training documents.

Detailed information about on-site training is available from the following telephone number: 069 7603-4665.



Visitor address: Helfmann-Park 1 • D-65760 Eschborn (Taunus)

## How to get there

**From the north (Kassel):** Follow the A 5 as far as Nordwestkreuz. At Nordwestkreuz, follow the signs for Wiesbaden (A 66). Stay in the right-hand lane towards Eschborn, do **not** drive up onto the A 66. Follow the signs for **Eschborn-Gewerbegebiet-Ost**, and turn right at the first set of traffic lights.

**From the south (Karlsruhe):** Follow the A 5 as far as Nordwestkreuz. At Nordwestkreuz, get into the far-right lane and follow the signs for **Eschborn**. At the traffic lights, turn right into Lorscher Straße. Then leave Lorscher Straße at the **Eschborn-Gewerbegebiet-Ost** exit and turn right at the first set of traffic lights.

**From the west (Wiesbaden):** Follow the A 66 as far as the **Eschborn** exit (17). Then turn left into Sossenheimer Straße. Then leave Sossenheimer Straße and head towards **Eschborn-Gewerbegebiet-Ost**. Follow the signs until the first set of traffic lights and turn right there.

**From the east (Hanau):** Follow the A 66 as far as Nordwestkreuz. At Nordwestkreuz, follow the signs towards **Eschborn**. After reaching Lorscher Straße, follow the signs for **Eschborn-Gewerbegebiet-Ost**, and turn right at the first set of traffic lights.

**Parking:** There are two similar buildings (white and red) in **Helfmann-Park 1**. You can drive through these buildings and you will find parking spaces reserved for Continental Aftermarket GmbH at the back of the red building. Then go to Reception to have your business partner called.

Continental Aftermarket GmbH  
TrainingsCenter  
P.O. Box 90 01 20  
60441 Frankfurt am Main  
Germany  
Telephone: +49 (0) 69 7603-4200  
Fax +49 (0) 69 7603-3913  
trainingscenter@continental-corporation.com  
www.continental-automotive.com

The information in this brochure only contains general descriptions and performance characteristics, which do not always take the described form in practical situations.



There may be a fee for using the mobile Internet according to your mobile phone contract. There are no additional costs!