

**GRABBER HTS**

The synergy of comfort, durability, and performance

**THE STRONG**  
SILENT TYPE



**GENERAL TIRE**



# Grabber HTS - History

---

Born from Baja, the technology behind the Grabber™ HTS was developed for the grueling conditions of desert competition.

General Tire's engineers then adapted that technology by focusing on the challenging conditions of the highway for today's drivers.



From this experience four key technologies were incorporated into the Grabber™ HTS to provide a synergy of comfort, durability, and performance.

Those key technologies are:  
Duragen™, Adaptive Performance™,  
Comfort Balance™, and Eco Ride™.



- **Nano Pro-Belt System™** - Ultra high tensile steel belt system protected by nano-coating: Brute strength
- **Protective Shield™** - Unique pattern design matched with high extension compound reduces stress: Even treadwear for reduced cut and chip
- **Micro-Sync Fibers™** - Bond the rubber compound to reinforcing materials : Confidence in the harshest driving conditions



- **Impact-Supression Tread Blocks** - Chamfered edges of tread blocks reduce contact of angular edges with the road: Quiet comfortable ride
- **Internal Cushioning System** - High-density cushion isolates, low-density cushion absorbs: Driver is more isolated from road vibration
- **Noise-Capturing Pockets** - Separate pockets for High and Low frequencies capture and absorb noise: Exceptionally quiet ride



- **Triple Sipe Concept (patent pending)** - 3 kinds of siping adapted for wet, dry, and winter driving: All-Season Confidence
- **Response Grooves™** - Provide directional guidance: Enhanced steering response
- **Hydro Channels™** - Forcibly eject water: Impressive hydroplaning resistance and wet traction
- **Stabilink Bars™** - System of connecting bars which adds circumferential stability: Excellent braking, acceleration and cornering



- **High-Tech Contour** - Provides a wider and more uniform footprint : Low rolling resistance with long, even wear
- **General Tire's Eco-Ride Compound** - Latest generation tread compound: Improves fuel economy and reduces harmful CO2 emissions

# Grabber HTS - History

## GRABBER HTS

The synergy of comfort, durability, and performance

**TRIPLE SIPE CONCEPT**  
three kinds of siping, adapted for wet, dry and winter driving, provide traction in all-season weather conditions

**NOISE-CAPTURING POCKETS**  
separate pockets for high and low frequencies capture and absorb noise for a quiet ride

**PROTECTIVE SHIELD™**  
unique design and high-extension compound combine to provide long treadwear

**STABILINK BARS™**  
a system of connecting bars within the tread elements add circumferential stability for excellent braking, acceleration and cornering

**INTERNAL CUSHIONING SYSTEM**  
for a smooth, comfortable ride

**HT BELT SYSTEM™**  
ultra high tensile steel belt system provides brute strength

**MICRO-SYNC FIBERS™**  
bond the rubber compound to reinforcing materials for driving confidence

**TWO-PLY POLYESTER CORD BODY**  
promotes ride comfort with positive steering response

**RESPONSE GROOVES™ AND HYDRO CHANNELS™**  
provide directional guidance and eject water for excellent wet handling and traction with improved hydroplaning resistance

**IMPACT SUPPRESSION TREAD BLOCKS**  
for a quieter, more comfortable ride without sacrificing treadlife

**ECO-RIDE COMPOUND**  
the latest generation tread compound that improves fuel economy and reduces CO<sub>2</sub> emissions

**TWO CAP NYLON PLYS**  
for improved uniformity for comfort and high-speed stability

Born from Baja, the technology behind the Grabber™ HTS was developed for the grueling conditions of desert competition.

General Tire's engineers then adapted that technology by focusing on the challenging conditions of the highway for today's drivers.

From this experience four key technologies were incorporated into the Grabber™ HTS to provide a synergy of comfort, durability, and performance.

UTQG RATING: 640 A B

GRABBER HTS  
60000 MILE LIMITED TREADWEAR WARRANTY  
Excludes: speed ratings above "T" and "LT" sizes

45 DAY FREE TRIAL  
visit [www.generaltire.com](http://www.generaltire.com) for more info

# Grabber HTS – Tire Sizes

	Size	Load/Speed	Load Range	Sidewall	Article Number	Billing Price
15	235/75R15	105T		OWL	15485150000	<b>180.70</b>
	235/75R15	109T		OWL	15485570000	<b>187.85</b>
16	255/65R16	109T		OWL	15485240000	<b>232.70</b>
	225/70R16	103T		OWL	15485230000	<b>188.50</b>
	235/70R16	106T		BSW	15486060000	<b>194.35</b>
	235/70R16	106T		OWL	15485170000	<b>199.55</b>
	245/70R16	107T		OWL	15485180000	<b>200.20</b>
	255/70R16	111T		OWL	15486070000	<b>209.95</b>
	265/70R16	112T		BSW	15485410000	<b>215.15</b>
	235/75R16	103T		BSW	15485280000	<b>189.15</b>
	235/75R16	108T		OWL	15485270000	<b>199.55</b>
	LT245/75R16	120/116S		BSW	04570820000	<b>253.50</b>
	LT245/75R16	120/116S		OWL	04570420000	<b>265.20</b>
17	245/65R17	107T		OWL	15485290000	<b>242.45</b>
	255/65R17	110T		OWL	15448730000	<b>256.10</b>
	LT265/70R17	121/118S	E	OWL	04570470000	<b>306.80</b>
18	LT275/65R18	123/120T	E	BSW	04571110000	<b>356.20</b>
	LT275/70R18	125/122T		BSW	04571130000	<b>343.20</b>
20	275/45R20	120/116S		BSW	15485340000	<b>281.45</b>
	275/55R20	110S		BSW	15485370000	<b>286.65</b>

# Grabber HTS - OE Fitments

---

VEHICLE	PROGRAM	TIRE SIZE
	Ford Expedition	P265/70R17
	GMT561	P245/70R17
	GMT900	P245/70R17
	GMT355	P215/70R16
	GMT610	P245/70R17

# Grabber HTS vs. Competition



Radial Long Trail T/A

33 sizes

40 articles



Radial Rover AT

37 sizes

40 articles



DynaPro AS RH03

39 sizes

39 articles



Discoverer H/T

41 sizes

50 articles



Destination LE

42 sizes

47 articles



Grabber HTS

51 sizes

66 articles





Ultra high strength steel belts, micro-fiber casing reinforcements, and a broad tire contour



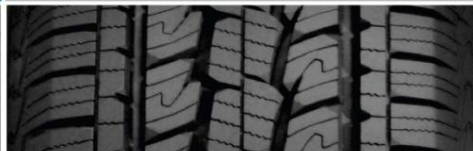
Response Grooves™, Stabilink Bars™ and three kinds of siping



Tread cushioning system and noise-capturing pockets



Improves fuel economy



Born from competition but adapted for the highway, this technology provides even treadwear for longer mileage and confidence in challenging conditions



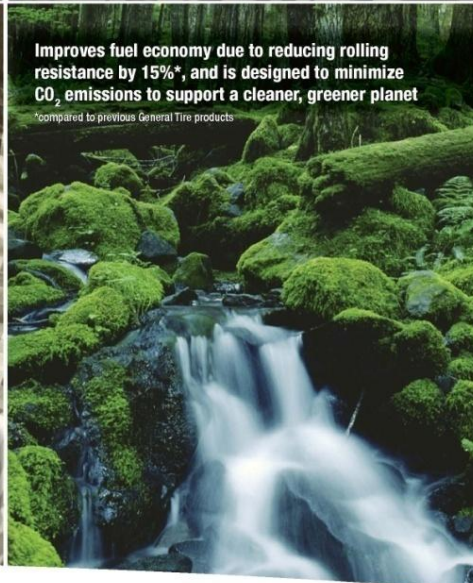
Ivan "Ironman" Stewart  
Baja Champion



Excellent all-season tire that promotes enhanced steering response and provides reliable performance when braking, accelerating, and cornering



A blend of technologies that provide a quieter, more comfortable ride without sacrificing responsiveness



Improves fuel economy due to reducing rolling resistance by 15%\*, and is designed to minimize CO<sub>2</sub> emissions to support a cleaner, greener planet

\*compared to previous General Tire products